

NT 40/1 TACT TE L

Compact and easy to transport: NT 40/1 Tact Te wet and dry vacuum cleaner with Tact filter cleaning system and 40-litre container with bumper for long periods of work without stopping.



Order no.

1.148-314.0

- 40-litre container, antistatic preparation, dust class L
- Tact filter cleaning, electric suction power regulation, device socket
- 360 mm Adv floor nozzle, crevice nozzle, Wet & Dry flat pleated filter, tool adapter

Technical data

EAN code		4054278299938
Number of current phases	Ph	1
Voltage	V	220 - 240
Frequency	Hz	50 - 60
Air flow	l/s	74
Vacuum	mbar / kPa	273 / 27.3
Container capacity	l	40
Container material		Plastic
Rated input power	W	max. 1380
Standard nominal width		ID 35
Cable length	m	7.5
Sound pressure level	dB(A)	69
Colour		anthracite
Weight without accessories	kg	14.4
Weight incl. packaging	kg	19.6
Dimensions (L × W × H)	mm	560 × 370 × 655

Scope of supply

Suction hose length:	4 m
Bend:	Plastic
Quantity of suction tubes:	2 Piece(s)
Suction tubes length:	550 mm
Suction tubes material:	Stainless steel
Quantity of filter bags:	1 Piece(s)
Filter bag material:	Fleece
Wet/dry floor nozzle width:	360 mm
Crevice nozzle	
Power tool connection adapter	
Flat pleated filter:	PES with PTFE coating

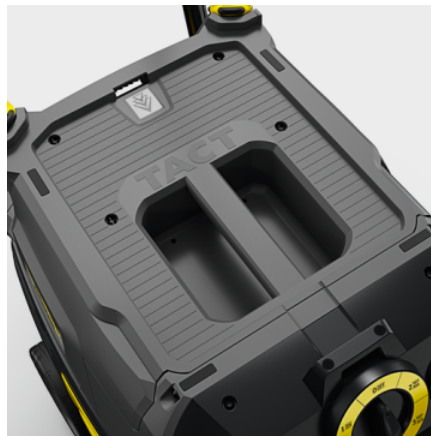
Equipment

Automatic cut-out features at max. filling quality	
Automatic switch-on/off for electric devices	
Antistatic system	
Filter cleaning:	Tact - Auto Filter Clean System
Sturdy bumper	
Protection class:	I
Stop swivel castor	



Suction hose connection in the machine head

- The suction hose port in the machine head makes for a larger usable container volume.
- Emptying the container is simple thanks to the connection of hose and machine head.



Storage rack and fixing options

- Toolboxes can be placed on the flat machine head without slipping thanks to its rubberised surfaces.
- Transport eyelets allow for the machine to be securely fastened with conventional lashing straps.



Optional push handle

- The optional push handle can be fitted quickly and easily for hassle-free transport to the place of use.

EQUIPMENT FOR NT 40/1 TACT TE L

1.148-314.0



		Order no.	Description	
FLAT PLEATED FILTER, STANDARD, BIA C OR UP TO DUST CLASS M				
Flachfaltfilter (PTFE)				
Flat-pleated filter packaged PES	1	6.907-662.0	Wet & Dry flat pleated filter made from PES fibre material with PTFE coating with a blue label. Suitable for vacuuming liquids, fine dust and coarse dirt from the M and L dust classes.	■
Flat pleated filter, PTFE	2	6.907-455.0	Ultimate flat pleated filter made from PES/PTFE fibre material with a black label. For the toughest applications when vacuuming liquids, fine dust and coarse dirt from dust classes M and L.	□
Flat pleated filter (paper)				
Flat filter only for replacement Kaerche	3	6.904-367.0	Dry flat pleated filter made from cellulose fibre material with a green label. Suitable for vacuuming fine dust and coarse dirt from dust classes L and M.	□
BENDS				
Plastic bend				
Elbow packaged NW35 2K	4	2.889-170.0	Ergonomic DN 35 plastic bend for wet and dry vacuum cleaners. Equipped with a clip 2.0 connection at the hose end and a cone connection at the accessory end.	■
Elbow electrically conducting packaged N	5	2.889-148.0	Antistatic, ergonomic bends with air-flow regulator in size DN 35 for dry vacuum cleaners. Equipped with a clip 2.0 connection at the hose end and a cone connection at the accessory end.	□
Elbow complete packaged NW35 2K	6	2.889-168.0	Electrically conductive, ergonomic plastic bend in size DN 35 for wet and dry vacuum cleaners. Equipped with a clip 2.0 connection at the hose end and a cone connection at the accessory end.	□
SUCTION NOZZLES				
All-purpose nozzles (wet/dry)				
Floor tool packaged NW35 360mm	7	2.889-152.0	For wet/dry cleaning: plastic Adv floor nozzle with width of 360 mm and nominal size of DN 35. Includes brush strips and squeegees that are easy to change.	■
Combination floor tool (dry)	8	6.906-511.0	Plastic switchable floor nozzle in nominal size DN 35 and with a width of 270 mm. For cleaning textile and hard surfaces.	□
Floor tool DN35	9	6.906-512.0	Plastic floor nozzle with rollers, width of 300 mm and nominal size of DN 35. Includes brush strips and squeegees. For removing fine dust, coarse dirt or liquids.	□
Floor tool neutrally DN35	10	6.906-384.0	For wet and dry vacuum cleaners from Kärcher: aluminium floor nozzle (DN 35) with a width of 370 mm, including brush strips and squeegees that are easy to change.	□
Wet and dry floor nozzle	11	2.889-118.0	Plastic Adv floor nozzle with width of 400 mm and nominal size of DN 35 for wet and dry vacuum cleaning. Includes brush strips and squeegees that are easy to change.	□
Crevice nozzles				
Crevice nozzle wet and dry packaged NW35	12	2.889-159.0	Crevice nozzle with nominal width DN 35 for Kärcher dry vacuum cleaners and wet and dry vacuum cleaners. Length 225 mm.	■
All-purpose brushes				
All-purpose brush	13	6.900-425.0	All-purpose brush PPN_Bristle	□
Car cleaning nozzles				
Ergonomic car nozzle, ID 35, 100 mm	14	2.889-356.0	Ergonomic and compact DN 35 car cleaning nozzle made from plastic with a working width of 100 mm for vehicle interior cleaning. Suitable for all wet and dry vacuum cleaners with DN 35 bends.	□

■ Included in delivery. □ Available accessories.

EQUIPMENT FOR NT 40/1 TACT TE L

1.148-314.0



	Order no.	Description	
SUCTION NOZZLES			
Car cleaning nozzles			
Car nozzle, ID 35, 90 mm	15	6.906-108.0	Flat angled, convenient, plastic, DN 35 car cleaning nozzle designed for all Kärcher wet and dry vacuum cleaners with bends. Working width: Approx. 90 mm. <input type="checkbox"/>
Suction brushes			
Suction brush DN35	16	6.903-862.0	Rotatable suction brush (DN 35) with high-quality synthetic hair bristles. Dimensions of the brush attachment: 70 × 45 mm. <input type="checkbox"/>
SUCTION TUBES			
Suction tubes stainless steel			
Set suction tube stainless steel NW35 55	17	2.889-192.0	The suction tube set consists of 2 suction tubes made of high-quality stainless steel (DN 35 and 550 mm long each). For Kärcher wet and dry vacuum cleaners. <input checked="" type="checkbox"/>
SUCTION HOSES			
Suction hoses with clip system 2.0 (compatible with vacuum cleaners from model year 2017 on)			
Suction hose	18	2.889-135.0	The suction hose in nominal width DN 35 and with 4 m length is suitable for use with wet and dry vacuum cleaners from Kärcher. <input checked="" type="checkbox"/>
	19	2.889-134.0	The suction hose in nominal width DN 35 and with 2.5 m length is suitable for use with wet and dry vacuum cleaners from Kärcher. <input type="checkbox"/>
Electrically conductive suction hose	20	2.889-136.0	The electrically conductive suction hose in nominal width DN 35 and with 2.5 m length is suitable for use with wet and dry vacuum cleaners. <input type="checkbox"/>
	21	2.889-137.0	The electrically conductive suction hose in nominal width DN 35 and with 4 m length is suitable for use with wet and dry vacuum cleaners from Kärcher. <input type="checkbox"/>
Suction hose	22	2.889-138.0	The suction hose in nominal width DN 40 and with 4 m length is suitable for use with wet and dry vacuum cleaners. <input type="checkbox"/>
	23	2.889-139.0	The suction hose in nominal width DN 40 and with 2.5 m length is suitable for use with wet and dry vacuum cleaners from Kärcher. <input type="checkbox"/>
Suction hose, oil-resistant	24	2.889-140.0	The oil-resistant suction hose in nominal width DN 40 and with 4 m length is suitable for use with wet and dry vacuum cleaners from Kärcher. <input type="checkbox"/>
Electrically conductive suction hose	25	2.889-141.0	The electrically conductive suction hose in nominal width DN 40 and with 4 m length is suitable for use with wet and dry vacuum cleaners. <input type="checkbox"/>
	26	2.889-142.0	The electrically conductive suction hose in nominal width DN 40 and with 2.5 m length is suitable for use with wet and dry vacuum cleaners. <input type="checkbox"/>
Extension hose packaged NW35 2.5m	27	2.889-145.0	The extension hose in nominal width DN 35 and with 2.5 m length is suitable for use with wet and dry vacuum cleaners and dry vacuum cleaners from Kärcher. <input type="checkbox"/>
Repair set NW35	28	2.889-149.0	Repair kit ID 35 for the new clip system. <input type="checkbox"/>

■ Included in delivery. □ Available accessories.

EQUIPMENT FOR NT 40/1 TACT TE L

1.148-314.0



		Order no.	Description	
SUCTION HOSES				
Suction hoses with clip system 2.0 (compatible with vacuum cleaners from model year 2017 on)				
Extension hose conductive packaged NW35	29	2.889-343.0	The electrically conductive extension hose in nominal width DN 35 and with 2.5 m length is suitable for use with wet and dry vacuum cleaners.	<input type="checkbox"/>
CONNECTING SLEEVES				
Adapter for electric power tools, clip on, el.				
Sleeve electrically conducting packaged	30	2.889-151.0	Tool adapter with rubber attachment and false air rotating ring suitable for regulating suction power when working with power tools. Compatible with suction hoses with clip 2.0 connection in DN 35.	<input checked="" type="checkbox"/>
Connecting sleeve C-DN (clip on taper), EL (electroconductive)				
Connection cone NW35	31	5.407-005.0	Adapter clip system DN 35 for connecting suction tubes and small nozzles to cone DN 35. Perfect for vehicle interior cleaning, even without the connection of other nozzles.	<input type="checkbox"/>
Adapter for electric power tools, screwable				
Power tool adapter, threaded, DN 35	32	5.453-016.0	3-way plastic adapter with fitting instructions. For DN 26 to DN 36. For connecting to an industrial DN 35 suction hose.	<input type="checkbox"/>
FILTER BAGS				
Fleece filter bags (3 ply)				
Fleece filter bags, 5 Piece(s), NT 40/1, NT 50/1	33	2.889-155.0	Tear-resistant 3-layer fleece filter bags of dust class M, suitable for Kärcher wet and dry vacuum cleaners. Made from 30% recycled plastic. Contents: 5-pack.	<input type="checkbox"/>
FILTER T/ NT				
Flat pleated filter HEPA, dust class H				
HEPA surface filter	34	6.904-242.0	HEPA-14 (H14) flat pleated filter for Kärcher wet and dry vacuum cleaners. Suitable for vacuuming hazardous dusts, coarse dirt and liquids.	<input type="checkbox"/>
Coarse filter for wet pickup				
Coarse dirt filter for wet pickup	35	6.904-287.0	Coarse dirt filter with perforated metal plate and foam seal to protect the turbines of most single-motor wet and dry vacuum cleaners from the Tact and Ap class from Kärcher.	<input type="checkbox"/>
Plastic sacks for dust-free disposal				
Plastic bag for dust-free disposal, 10 Piece(s), NT 30/1, NT 40/1, NT 50/1	36	2.889-158.0	PE plastic sack for dust-free disposal.	<input type="checkbox"/>
Membrane filter / fabric filter				
Candle Filter - Wood, NT 30/1, NT 40/1, NT 50/1	37	2.414-000.0	Wood cartridge filter made from textile material with PTFE coating and a brown label. For safely vacuuming large quantities of wood and fibre dust from dust classes M and L.	<input type="checkbox"/>
Membrane filter, NT 30/1, NT 40/1, NT 50/1	38	2.889-281.0	Additional membrane filter made from non-woven fabric for machines in the Tact and Ap range. To be pulled directly over the container, it enables vacuuming without a filter bag. Can be washed and reused.	<input type="checkbox"/>
TARGET GROUP SPECIFIC VACUUM CLEANER ACCESSORY SETS				
Universal kit for industrial and commercial use	39	2.637-595.0	Accessory kit for wet and dry vacuum cleaners from Kärcher. Perfect for trade and industry.	<input type="checkbox"/>
Car cleaning kit	40	2.862-166.0	Vehicle interior cleaning accessory kit in nominal width DN 35 for Kärcher wet and dry vacuum cleaners. The kit comprises various nozzles and adapter pieces in nominal widths DN 35 and DN 40.	<input type="checkbox"/>
OTHER ACCESSORIES FOR T AND NT				
Add-on kit shearing shackle NT 40/1	41	2.643-868.0	Ergonomic push handle for the NT 40/1 Tact Te.	<input type="checkbox"/>
Drilling dust tool	42	2.679-000.0	Drilling dust nozzle for dust-free vacuuming of boreholes. Suitable for dry and wet and dry vacuum cleaners from Kärcher.	<input type="checkbox"/>

■ Included in delivery. □ Available accessories.

EQUIPMENT FOR NT 40/1 TACT TE L 1.148-314.0



		Order no.	Description	
OTHER ACCESSORIES FOR T AND NT				
Adapter old packaged NW35	43	2.889-312.0	Adapter for connection of hoses of the new accessory system of dry and wet and dry vacuum cleaners to bends or extension hoses of the old system. For nominal width DN 35.	<input type="checkbox"/>
Adapter connection old elektr. leitend	44	5.031-436.0	Electroconductive adapter for connecting NT hoses with bayonet 1.0 connection of nominal widths DN 35, 40, 50 to the new accessory system for wet and dry vacuum cleaners from Kärcher.	<input type="checkbox"/>

Available accessories.